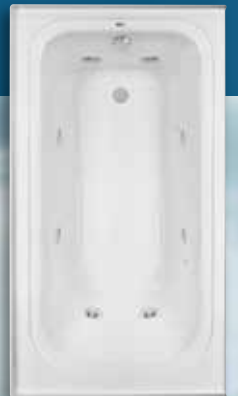




WHIRLPOOLS, SOAKING TUBS & SHOWER BASES



PROFLO bathing products offer your customers stylish bathing at an outstanding value. Affordable, fashionable, quality-engineered and trouble-free, they have quickly become the bathing products of choice. All PROFLO tubs units are quality checked and water tested prior to delivery.



TABLE OF CONTENTS

Features _____	4
Drop-In Tubs _____	5-8
Skirted Tubs _____	9-13
Shower Bases _____	14
Warranty Information _____	15

FEATURES



ACRYLIC CONSTRUCTION

All PROFLO baths are constructed of professional grade acrylic



HIGH-FLOW ADJUSTABLE JETS

Color matched, high-flow adjustable 1/4 turn jets are standard on all PROFLO whirlpool baths. You can adjust the power and flow of each individual jet to control the intensity of the massage.



POWERFUL PUMP MOTORS

A high efficiency motor is standard on all PROFLO whirlpool baths. The pump motor is pre-wired and pre-plumbed for simple plug-in installation. Requires a single 115V/20 amp GFCI circuit.



SAFETY SUCTION TRIM COVER

This strainer prevents foreign objects from entering the whirlpool system.



FACTORY INSTALLED HEATER BLANK

This factory installed heater blank allows for fast and easy field installation of an in-line heater.



REMOVABLE ACCESS PANEL

Removable access panel, only applicable for whirlpool skirted models



TILE FLANGE KITS

Optional tile flange kits for drop in models
PFTLK - Tile flange kit for rectangle and oval baths
PFTLKC - Tile flange kit for corner baths



WATER TESTED PLUMBING

Each joint is solvent welded, clamped and water tested prior to delivery for long-term reliability.



ON/OFF SWITCH

The low-profile air switch

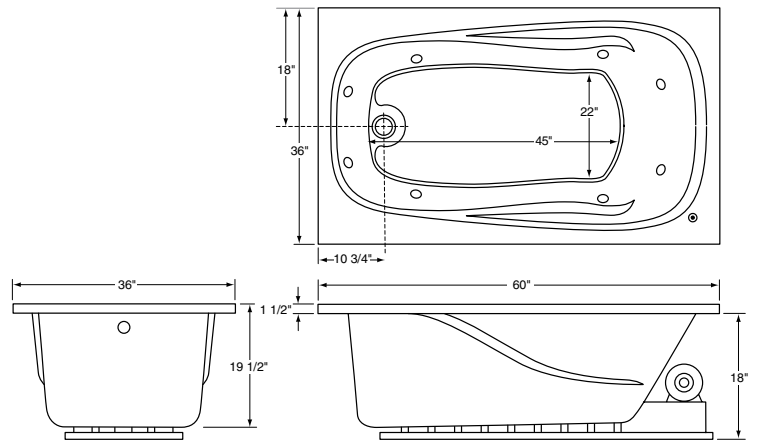
PFWPLUSA6036
PFS6036A
PFWPLUSA6032
PFS6032A

- Available as whirlpool or soaking tub
- Available in white or biscuit
- Textured, slip-resistant bottom
- Safety suction and silent air induction
- Adjustable, color matched jets, including two lumbar jets

DROP-IN TUBS

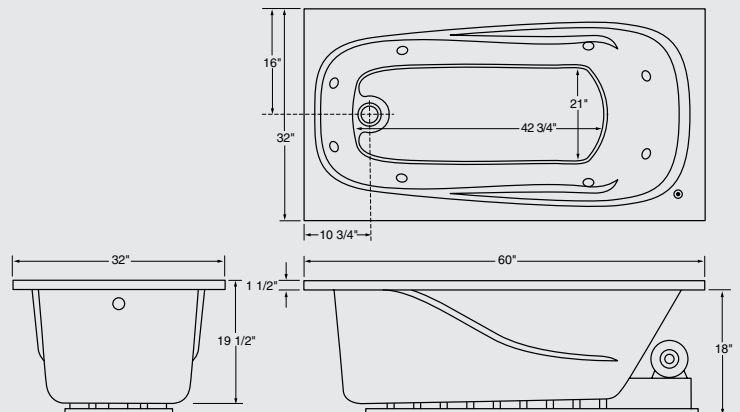
GENERAL SPECIFICATIONS 6036

- 60" length
- 36" width
- 19-1/2" height
- 45 gallon operating capacity
- 60 gallon total capacity to overflow
- 8 jets



GENERAL SPECIFICATIONS 6032

- 60" length
- 32" width
- 19-1/2" height
- 40 gallon operating capacity
- 50 gallon total capacity to overflow
- 8 jets



NOTE: All dimensions and specifications are nominal and may vary $\pm 1/4"$. Use actual products for accuracy in critical situations. All whirlpools require a single 115V/20 amp GFCI circuit.

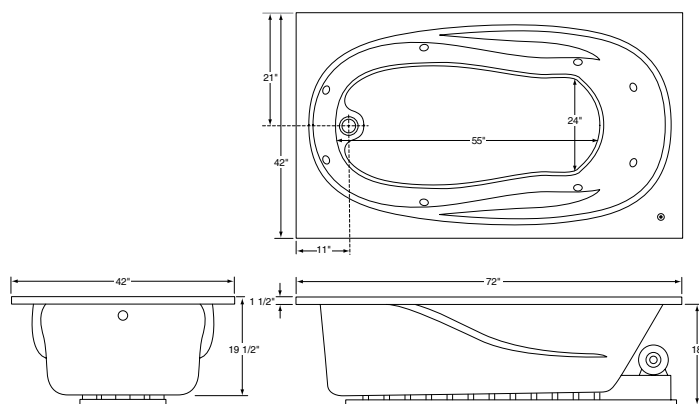
PFWPLUSA7242
PFS7242A
PFWPLUSA7236
PFS7236A

- Available as whirlpool or soaking tub
- Available in white or biscuit
- Textured, slip-resistant bottom
- Safety suction and silent air induction
- Adjustable, color matched jets, including two lumbar jets

DROP-IN TUBS

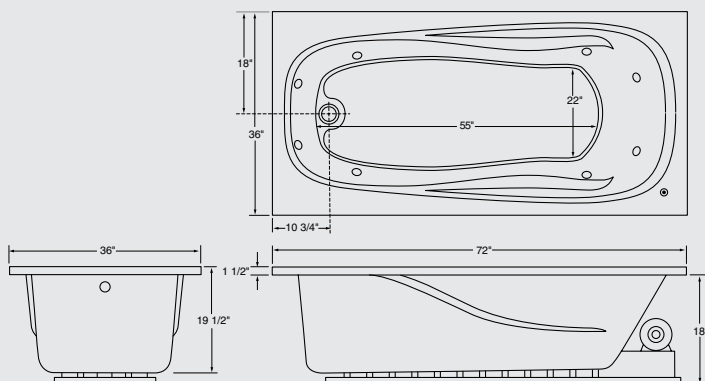
GENERAL SPECIFICATIONS 7242

- 72" length
- 42" width
- 19-1/2" height
- 55 gallon operating capacity
- 80 gallon total capacity to overflow
- 8 jets



GENERAL SPECIFICATIONS 7236

- 72" length
- 36" width
- 19-1/2" height
- 50 gallon operating capacity
- 70 gallon total capacity to overflow
- 8 jets



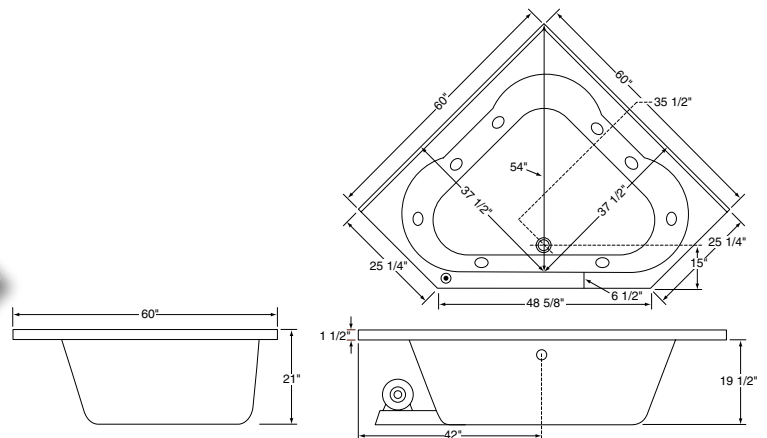
PFWPLUSA6060(L OR R)
PFS6060
PFWPLUSA6042
PFS6042A

- Available as whirlpool or soaking tub
- Available in white or biscuit
- Textured, slip-resistant bottom
- Safety suction and silent air induction
- Adjustable, color matched jets, including two lumbar jets

DROP-IN TUBS

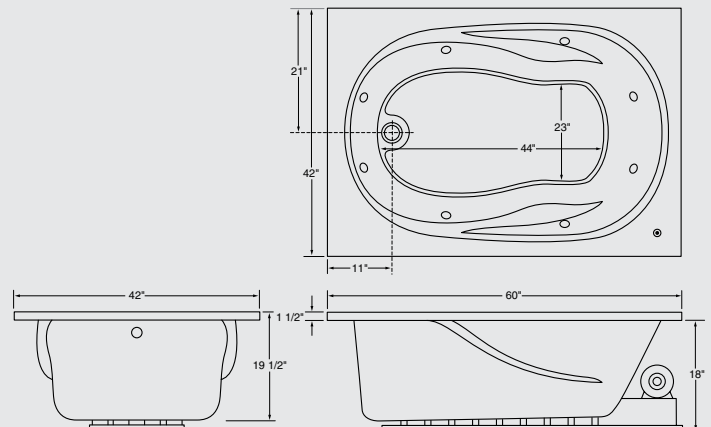
GENERAL SPECIFICATIONS 6060

- 60" length
- 60" width
- 21" height
- 72 gallon operating capacity
- 109 gallon total capacity to overflow
- 8 jets



GENERAL SPECIFICATIONS 6042

- 60" length
- 42" width
- 19-1/2" height
- 45 gallon operating capacity
- 60 gallon total capacity to overflow
- 8 jets



NOTE: All dimensions and specifications are nominal and may vary $\pm 1/4"$. Use actual products for accuracy in critical situations. All whirlpools require a single 115V/20 amp GFCI circuit.

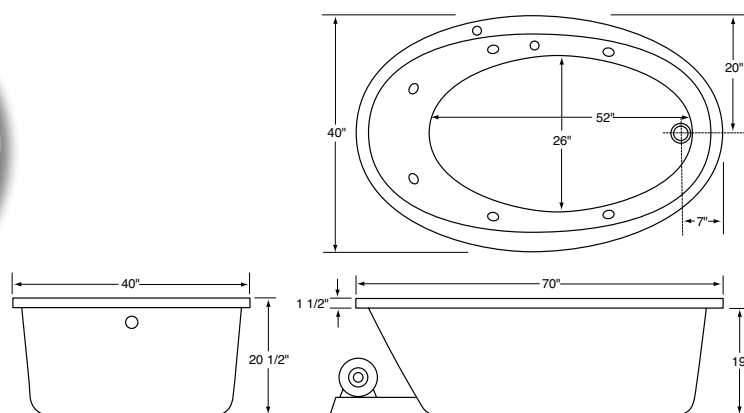
PFWPLUSA7040
PFS7040
PFWPLUSA5838
PFS5838

- Available as whirlpool or soaking tub
- Available in white or biscuit
- Textured, slip-resistant bottom
- Safety suction and silent air induction
- Adjustable, color matched jets, including two lumbar jets

DROP-IN TUBS

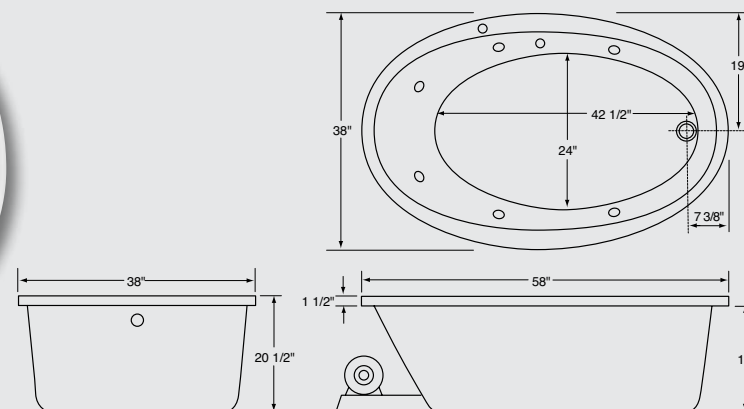
GENERAL SPECIFICATIONS 7040

- 70" length
- 40" width
- 20-1/2" height
- 50 gallon operating capacity
- 75 gallon total capacity to overflow
- 6 jets



GENERAL SPECIFICATIONS 5838

- 58" length
- 38" width
- 20-1/2" height
- 40 gallon operating capacity
- 50 gallon total capacity to overflow
- 6 jets



PFW6060SKPLA
PFS6060SK

- Available as whirlpool or soaking tub
- Available in white or biscuit
- Textured, slip-resistant bottom
- Integral tile flange
- Safety suction and silent air induction
- Adjustable, color matched jets, including two lumbar jets
- Removable access panel on whirlpools

SKIRTED TUBS

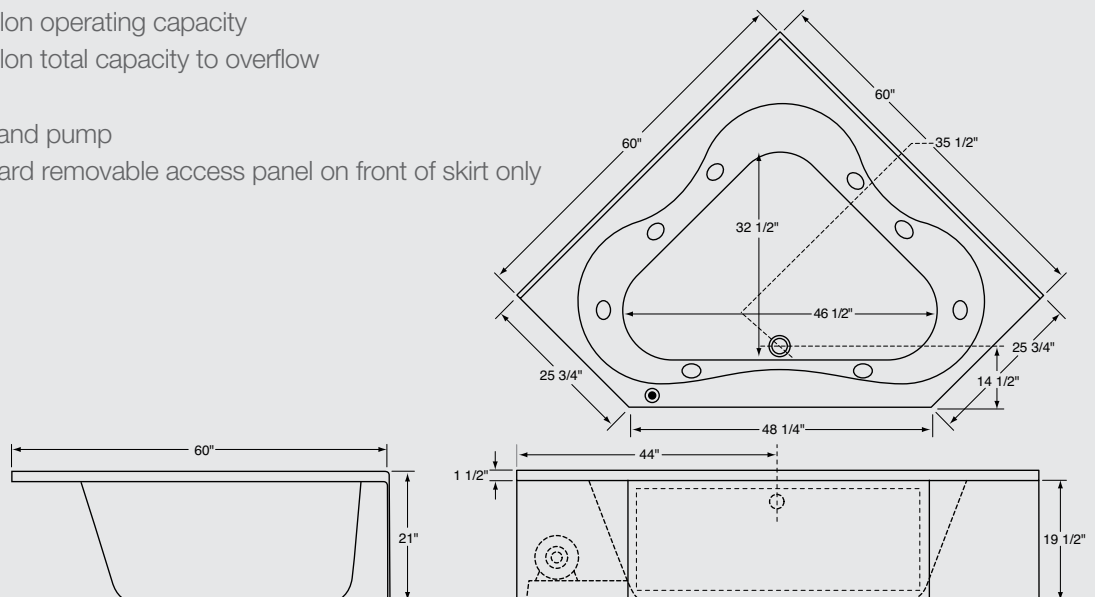
PROFLO SKIRTED BATH COLLECTION

The PROFLO skirted bath collection features spacious bathing wells with textured, slip-resistance bottoms for safety, and softly sculpted edges for luxury and sophistication. These fashionable baths are very competitive with standard gelcoat baths and the integral molded skirt eliminates the need for tiling or other carpentry work.



GENERAL SPECIFICATIONS 6060

- 60" length
- 60" width
- 21" height
- 60 gallon operating capacity
- 94 gallon total capacity to overflow
- 8 jets
- Left-hand pump
- Standard removable access panel on front of skirt only



NOTE: All dimensions and specifications are nominal and may vary $\pm 1/4"$. Use actual products for accuracy in critical situations. All whirlpools require a single 115V/20 amp GFCI circuit.

PFW6042A(L OR R)SK
PFS6042(L OR R)SK
PFW6636A(L OR R)SK
PFS6636(L OR R)SK

- Available as whirlpool or soaking tub
- Available in white or biscuit
- Textured, slip-resistant bottom
- Integral tile flange
- Safety suction and silent air induction
- Adjustable, color matched jets, including two lumbar jets
- Removable access panel on whirlpools

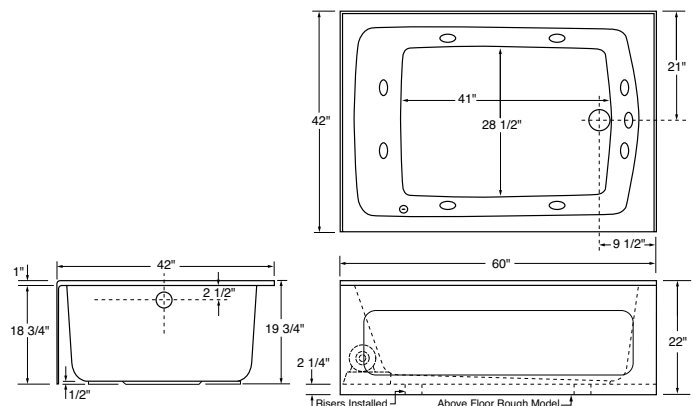
SKIRTED TUBS

GENERAL SPECIFICATIONS 6042

- 60" length
- 42" width
- 19-3/4" height
- 55 gallon operating capacity
- 75 gallon total capacity to overflow
- 8 jets



Skirted baths can be ordered as above floor rough models with factory-installed 2-1/4" risers if required.

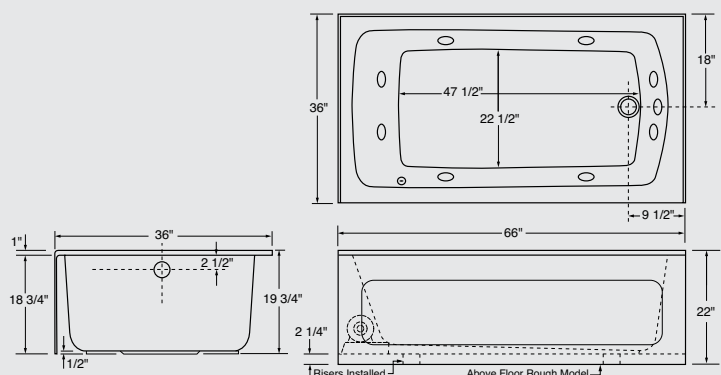


GENERAL SPECIFICATIONS 6636

- 66" length
- 36" width
- 19-3/4" height
- 40 gallon operating capacity
- 60 gallon total capacity to overflow
- 8 jets



NOTE: All dimensions and specifications are nominal and may vary $\pm 1/4$ ". Use actual products for accuracy in critical situations. All whirlpools require a single 115V/20 amp GFCI circuit.



Skirted baths can be ordered as above floor rough models with factory-installed 2-1/4" risers if required.

PFW7242A(L OR R)SK
PFS7242(L OR R)SK
PFW7236A(L OR R)SK
PFS7236(L OR R)SK

- Available as whirlpool or soaking tub
- Available in white or biscuit
- Textured, slip-resistant bottom
- Integral tile flange
- Safety suction and silent air induction
- Adjustable, color matched jets, including two lumbar jets
- Removable access panel on whirlpools

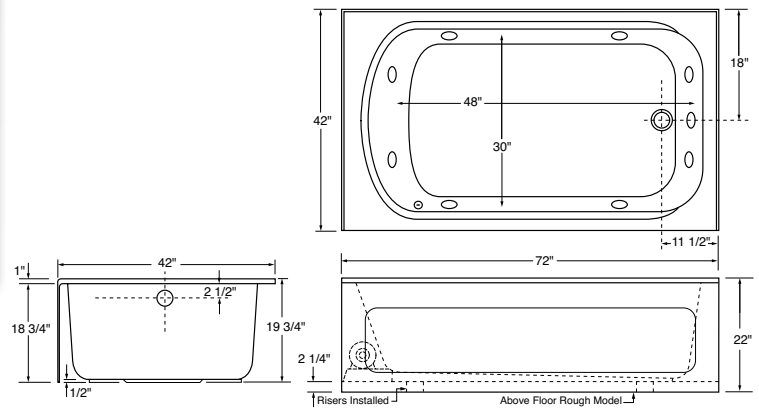
SKIRTED TUBS

GENERAL SPECIFICATIONS 7242

- 72" length
- 42" width
- 19-3/4" height
- 55 gallon operating capacity
- 80 gallon total capacity to overflow
- 8 jets



Skirted baths can be ordered as above floor rough models with factory-installed 2-1/4" risers if required.

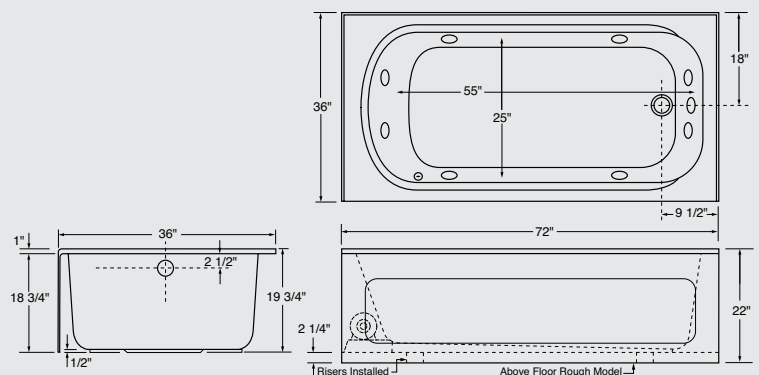


GENERAL SPECIFICATIONS 7236

- 72" length
- 36" width
- 19-3/4" height
- 50 gallon operating capacity
- 70 gallon total capacity to overflow
- 8 jets



Skirted baths can be ordered as above floor rough models with factory-installed 2-1/4" risers if required.



PFW6036A(L OR R)SK
PFS6036(L OR R)SK
PFW6032A(L OR R)SK
PFS6032(L OR R)SK

- Available as whirlpool or soaking tub
- Available in white or biscuit
- Textured, slip-resistant bottom
- Integral tile flange
- Safety suction and silent air induction
- Adjustable, color matched jets, including two lumbar jets
- Removable access panel on whirlpools

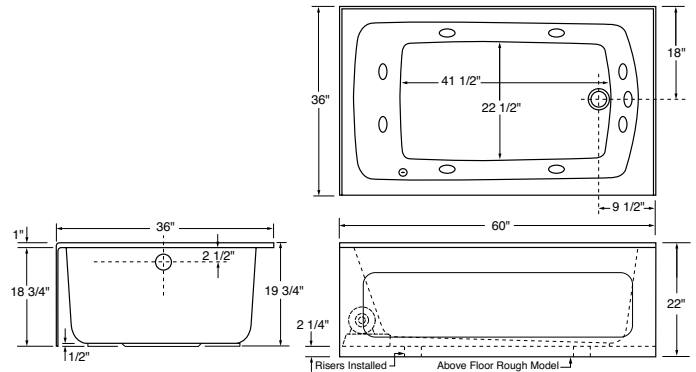
SKIRTED TUBS

GENERAL SPECIFICATIONS 6036

- 60" length
- 36" width
- 19-3/4" height
- 40 gallon operating capacity
- 60 gallon total capacity to overflow
- 8 jets



Skirted baths can be ordered as above floor rough models with factory-installed 2-1/4" risers if required.

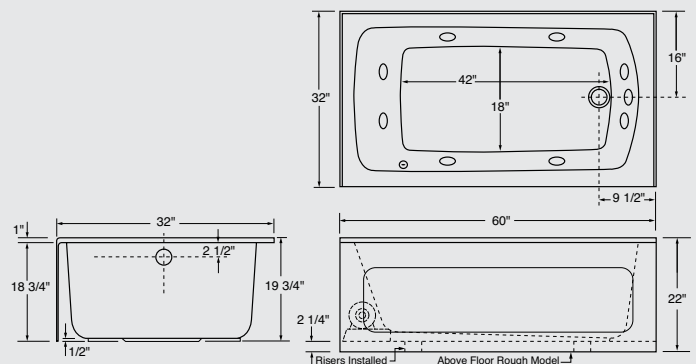


GENERAL SPECIFICATIONS 6032

- 60" length
- 32" width
- 19-3/4" height
- 40 gallon operating capacity
- 45 gallon total capacity to overflow
- 8 jets



Skirted baths can be ordered as above floor rough models with factory-installed 2-1/4" risers if required.



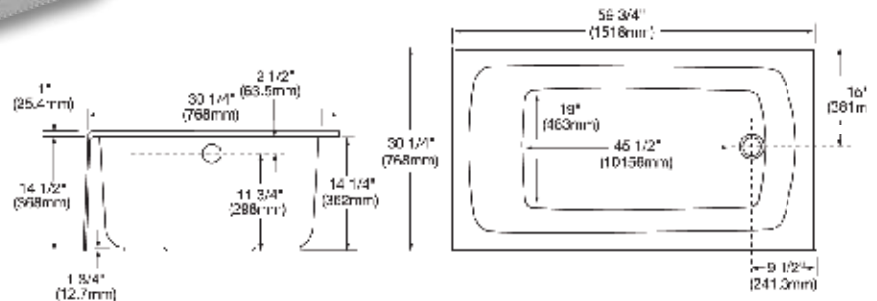
PFS6030LSKBS
PFS6030LSKWH
PFS6030RSKBS
PFS6030RSKWH

- Available as whirlpool or soaking tub
- Available in white or biscuit
- Textured, slip-resistant bottom
- Integral tile flange
- Safety suction and silent air induction
- Adjustable, color matched jets, including two lumbar jets
- Removable access panel on whirlpools

SKIRTED TUBS

GENERAL SPECIFICATIONS 6032

- 59-3/4" length
- 33 gallon operating capacity
- 30-1/4" width
- 35 gallon total capacity to overflow
- 15-1/2" height
- Soaking bath



PFSB SERIES

- One-piece unit molded of durable composite
- Non-porous surface-stain, thermal and shock resistant
- Includes integrally molded drain with compression gasket and strainer
- Slip-resistant surface
- White only

SHOWER BASES



PFSB3232WH	32X32 Shower Base with Strainer
PFSB3434WH	34X34 Shower Base with Strainer
PFSB3636NEOWH	36X36 NEO Shower Base with Strainer
PFSB3636WH	36X36 Shower Base with Strainer
PFSB4234WH	42X34 Shower Base with Strainer
PFSB4242WH	42X42 Shower Base with Strainer
PFSB4832WH	48X32 Shower Base with Strainer
PFSB4834WH	48X34 Shower Base with Strainer
PFSB5434WH	54X34 Shower Base with Strainer
PFSB6034WH	60X34 Shower Base with Strainer

Optional Part #	Description
PFSBSTR	Strainer F/PFSB Series White
PFSBGSKT	Gasket F/PFSB Series



WARRANTY AND CODES

PROFLO tubs have complete installation, maintenance, care and cleaning instructions. They feature a 5-year limited warranty.

QUESTIONS?

Visit our dedicated website PROFLO.com

E-mail our devoted support team at PROFLO.customersupport@ferguson.com
or call 1-800-221-3379 for live support



PROFLO.COM